

Penalty Enforcement



Fort Worth Football Officials
Training Program

Penalty Enforcement Outline

- Penalties Completed – Offsetting Fouls
- Enforcement: “3 and 1” Principle
- Post Scrimmage Kick Enforcement
- Fouls on Scoring Plays
- Defensive Pass Interference



Penalty vs. Foul

- Foul: Rule infraction for which a penalty is enforced
- Penalty: Consequences of a rule infraction – Accepted or Declined

or...

Foul is to “crime” as penalty is to “punishment”



Penalties Completed

- A penalty is completed when
 - Accepted
 - Declined
 - Cancelled
- Any penalty may be declined
 - Exception: a player disqualification may not be declined
- Multiple live ball fouls by one team – offended team only chooses ONE



Offsetting Fouls 10-1-4

- Only live-ball fouls offset
- Exceptions:
 - “Clean Hands Provision”
 - Post Scrimmage Kick Enforcement
 - Try, after Team B possession
 - Extra Periods, after Team B possession



Offsetting Fouls 10-1-4

- Only live-ball fouls offset
- Exceptions:
 - “Clean Hands Provision”

A22 and A39 are in motion at the snap. B55 intercepts a forward pass. B63 commits a blindside block against A79 on the return.

RULING:



Offsetting Fouls 10-1-4

- Only live-ball fouls offset
- Exceptions:
 - “Clean Hands Provision”

A22 and A39 are in motion at the snap. B55 intercepts a forward pass. B63 commits a blindside block against A79 on the return.

RULING: Team B has “Clean Hands” as their foul was committed AFTER the change of possession. Team B may decline the illegal shift and retain possession following the completion of the penalty for the illegal block.



Offsetting Fouls 10-1-4

- Only live-ball fouls offset
- Exceptions:
 - “Clean Hands Provision”

At the snap, Team A has five players in the backfield and B71 is lined up in the neutral zone. On the play, B47 recovers A22's fumble. B55 blocks A18 below the waist on the return.

RULING:



Offsetting Fouls 10-1-4

- Only live-ball fouls offset
- Exceptions:
 - “Clean Hands Provision”

At the snap, Team A has five players in the backfield and B71 is lined up in the neutral zone. On the play, B47 recovers A22’s fumble. B55 blocks A18 below the waist on the return.

RULING: Offsetting fouls. No option. Team B was not “clean” before the change of possession.



Offsetting Fouls 10-1-4

- Only live-ball fouls offset
- Exceptions:
 - “Clean Hands Provision”

B23 intercepts A10’s legal forward pass. B76 clips during the return. A45 tackles B23 by grabbing and twisting the facemask.

RULING:



Offsetting Fouls 10-1-4

- Only live-ball fouls offset
- Exceptions:
 - “Clean Hands Provision”

B23 intercepts A10’s legal forward pass. B76 clips during the return. A45 tackles B23 by grabbing and twisting the facemask.

RULING: Team B may decline offsetting fouls and retain the ball after the penalty for B76’s foul is completed. Note: Timing of A45’s foul does not matter.



Penalty Enforcement: 10-2-2-c/d

- **WHERE IS THE BASIC SPOT?**
 - Benchmark for application of “3-and-1” Principle
 - Depends on the type of play when foul occurred
- **WHAT IS THE ENFORCEMENT SPOT?**
 - Previous Spot (a basic spot)
 - End of the Run (a basic spot)
 - Spot of the Foul
 - Succeeding Spot (for dead-ball fouls)
 - End of the Kick (for PSK)



Where is the **Basic Spot**?

Depends on the type of play...

- **End of the Related Run**

- Running plays when run ends beyond the NZ
- Running plays when there is no NZ (ex: during a play after a turnover)

- **Previous Spot**

- Running plays when run ends behind NZ
- Forward Pass Plays
- Kick Plays (except when PSK applies)



Wait... what does “End of the Related Run” mean?

- The spot where a run ends can be:
 - Where the ball becomes dead
 - Where a player fumbles the ball
 - Where the ball is handed to another player
 - From where a backwards or illegal pass is thrown
 - Where an illegal scrimmage kick is made



“3-and-1” Principle 10-2-2-c/d

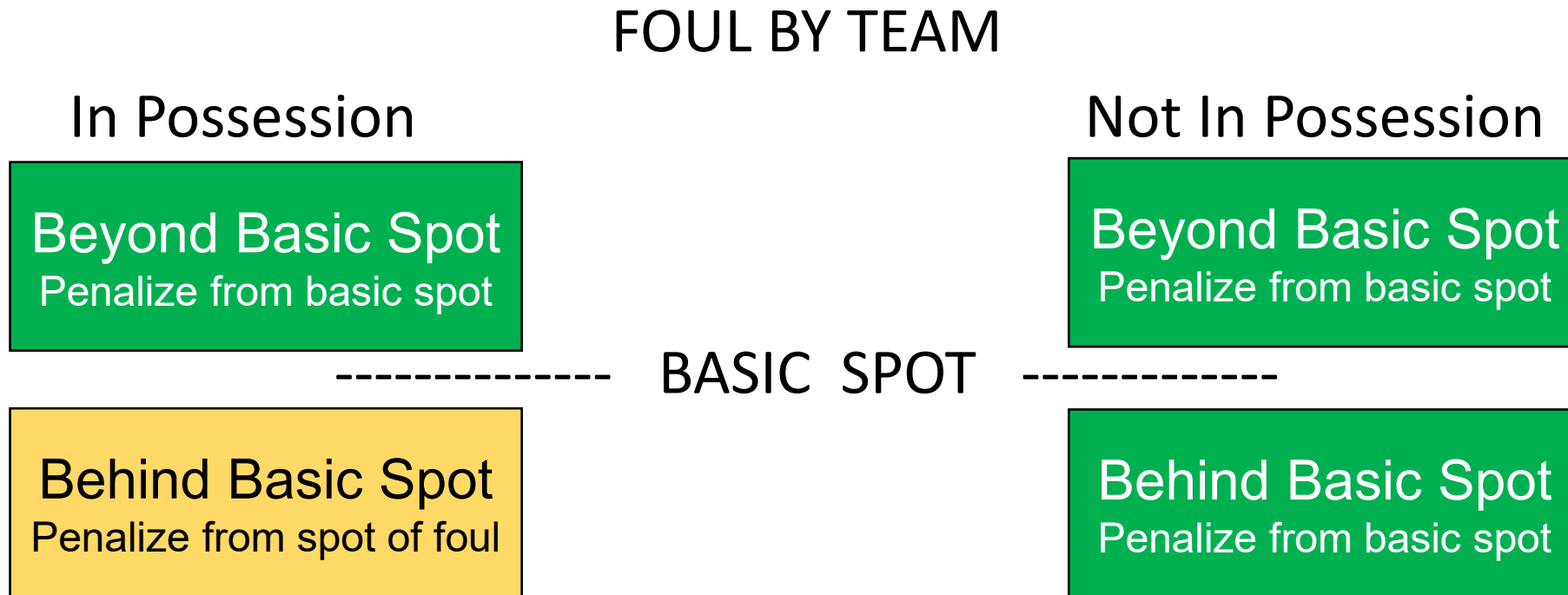
- Applies ONLY when no enforcement spot is specified in the rule or penalty

Ask yourself:

- **WHAT** kind of play was run when the foul occurred?
- **WHERE** is the BASIC SPOT?
- **WHO** fouled?
- **WHERE** is the FOUL in relation to the BASIC SPOT?



Diagram for "3-and-1" Principle

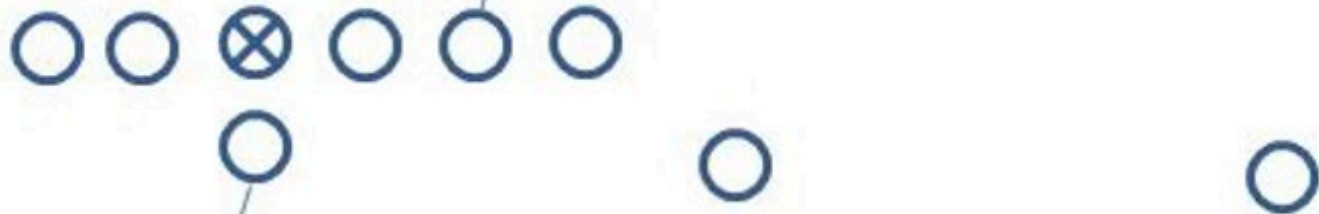


****Remember: 3-and-1 only applies when no enforcement spot is specified in the rule or penalty!**



X

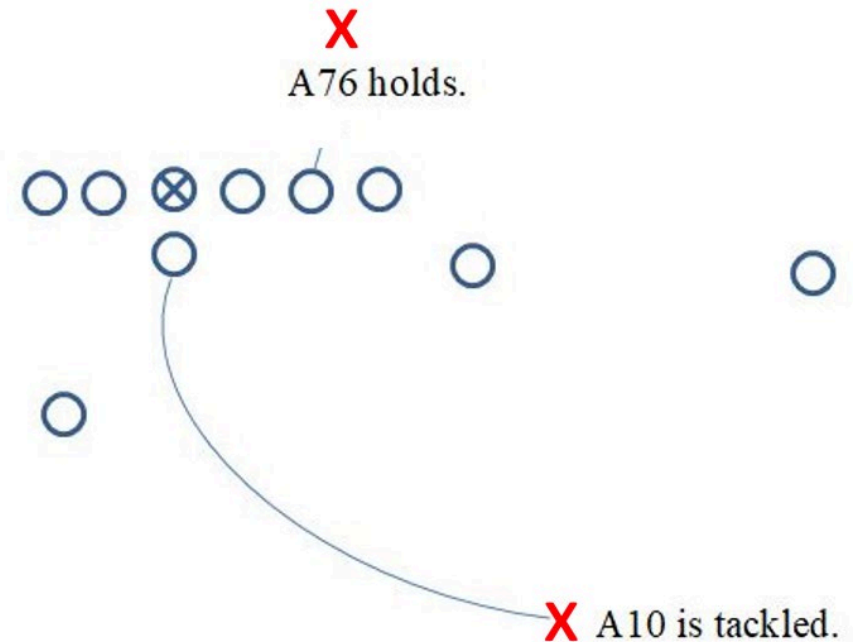
A76 holds.



X A10 is tackled.

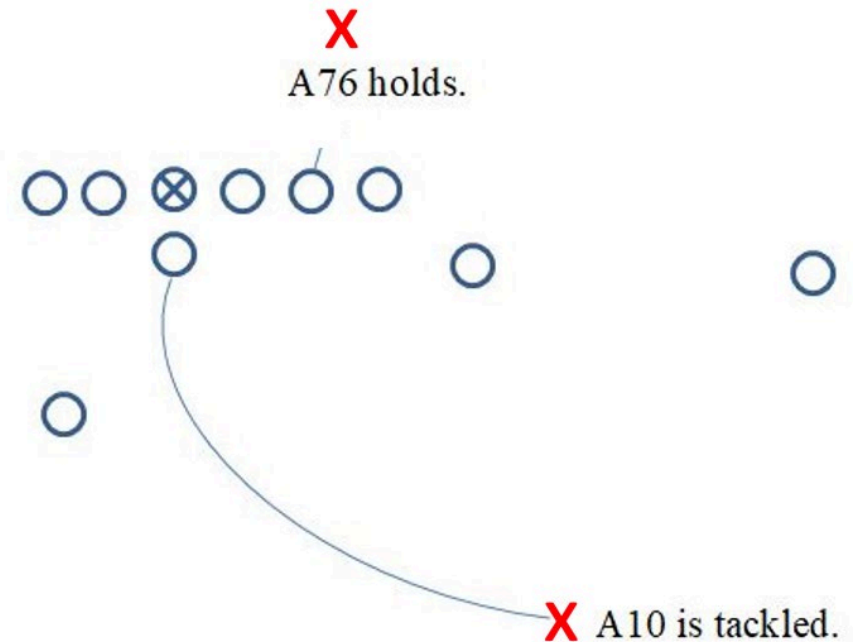
Let's Practice...

- **WHAT** kind of play was run when the foul occurred?
- **WHERE** is the BASIC SPOT?
- **WHO** fouled?
- **WHERE** is the FOUL in relation to the BASIC SPOT?



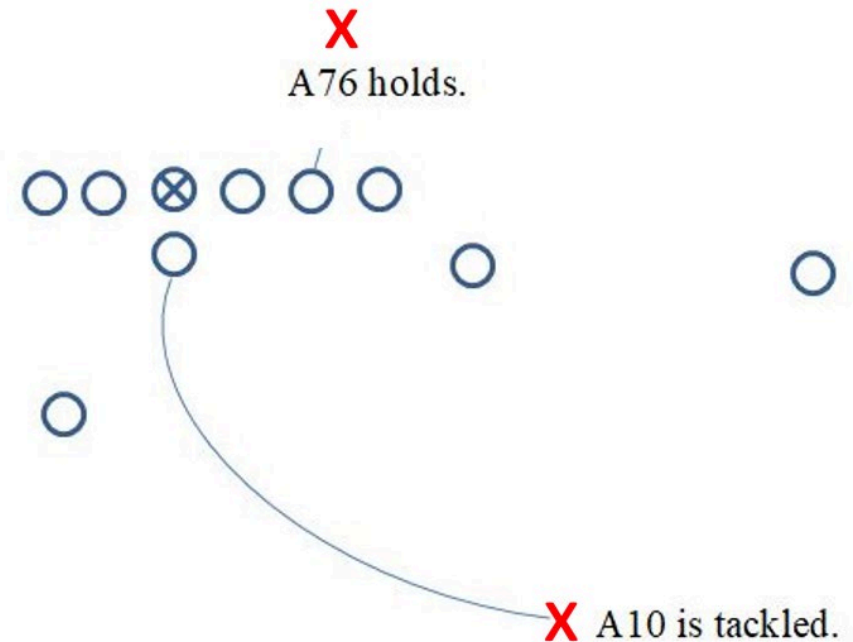
Let's Practice...

- **WHAT** kind of play was run when the foul occurred?
 - Running play ends behind NZ
- **WHERE** is the BASIC SPOT?
- **WHO** fouled?
- **WHERE** is the FOUL in relation to the BASIC SPOT?



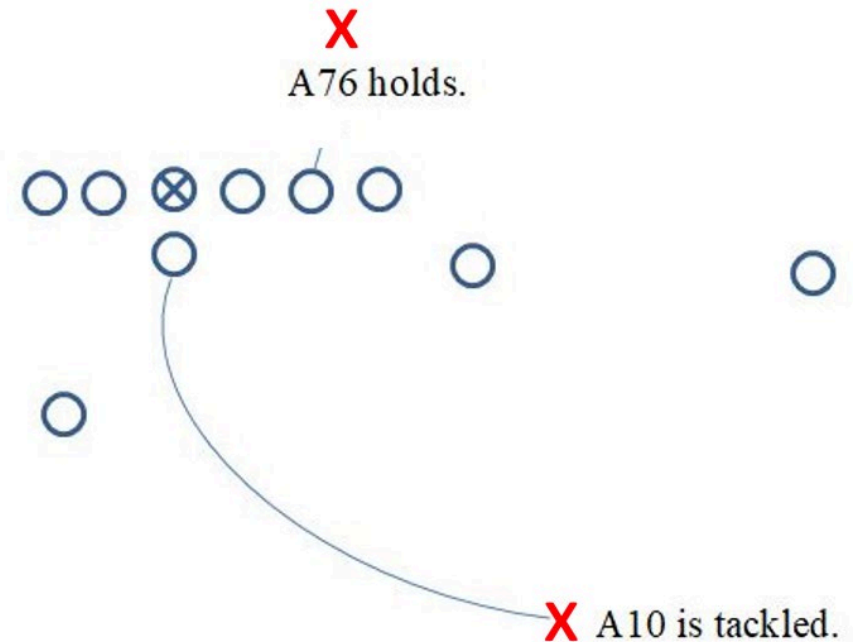
Let's Practice...

- **WHAT** kind of play was run when the foul occurred?
 - Running play ends behind NZ
- **WHERE** is the BASIC SPOT?
 - Previous Spot
- **WHO** fouled?
- **WHERE** is the FOUL in relation to the BASIC SPOT?



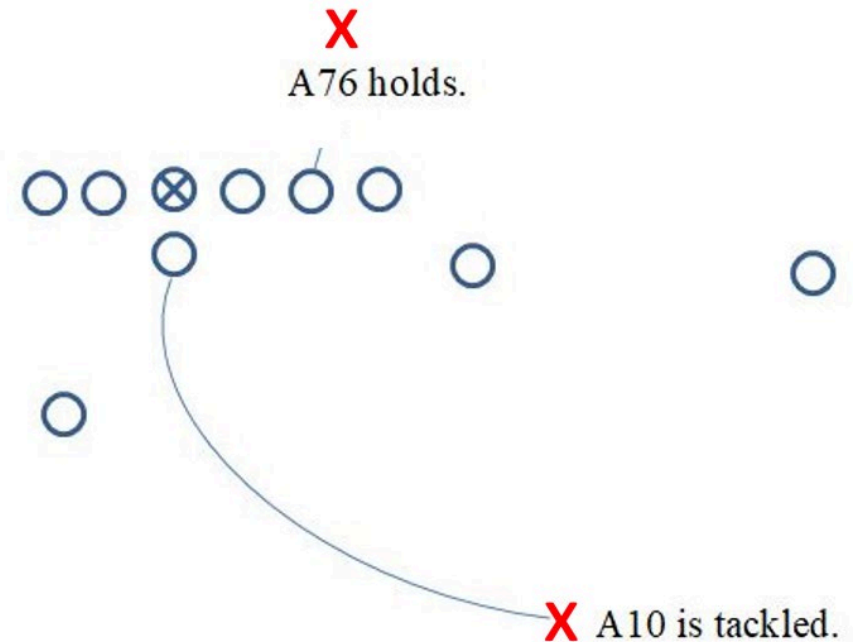
Let's Practice...

- **WHAT** kind of play was run when the foul occurred?
 - Running play ends behind NZ
- **WHERE** is the BASIC SPOT?
 - Previous Spot
- **WHO** fouled?
 - Team in possession
- **WHERE** is the FOUL in relation to the BASIC SPOT?



Let's Practice...

- **WHAT** kind of play was run when the foul occurred?
 - Running play ends behind NZ
- **WHERE** is the BASIC SPOT?
 - Previous Spot
- **WHO** fouled?
 - Team in possession
- **WHERE** is the FOUL in relation to the BASIC SPOT?
 - Beyond Basic Spot



Enforcement?

FOUL BY TEAM

In Possession

Beyond Basic Spot
Penalize from basic spot

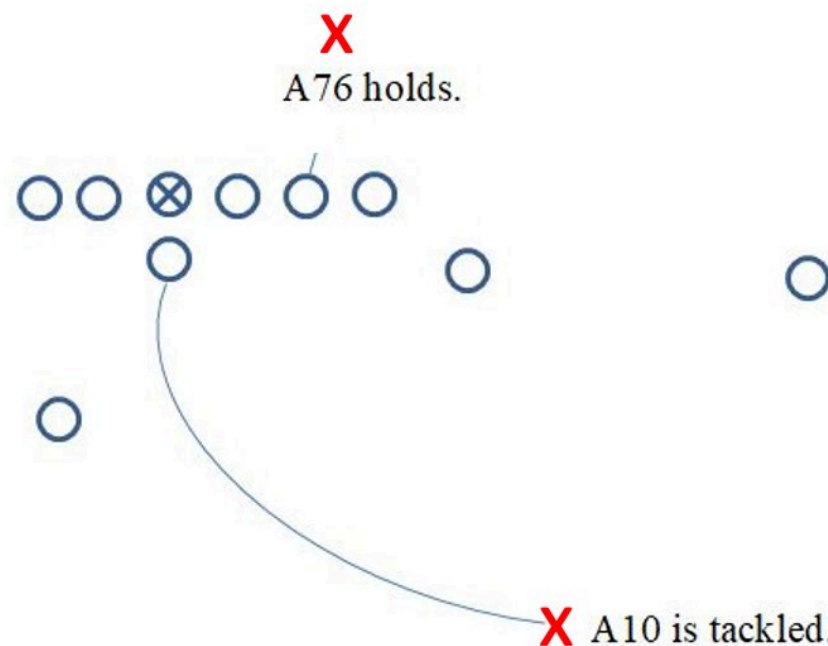
Behind Basic Spot
Penalize from spot of foul

BASIC SPOT

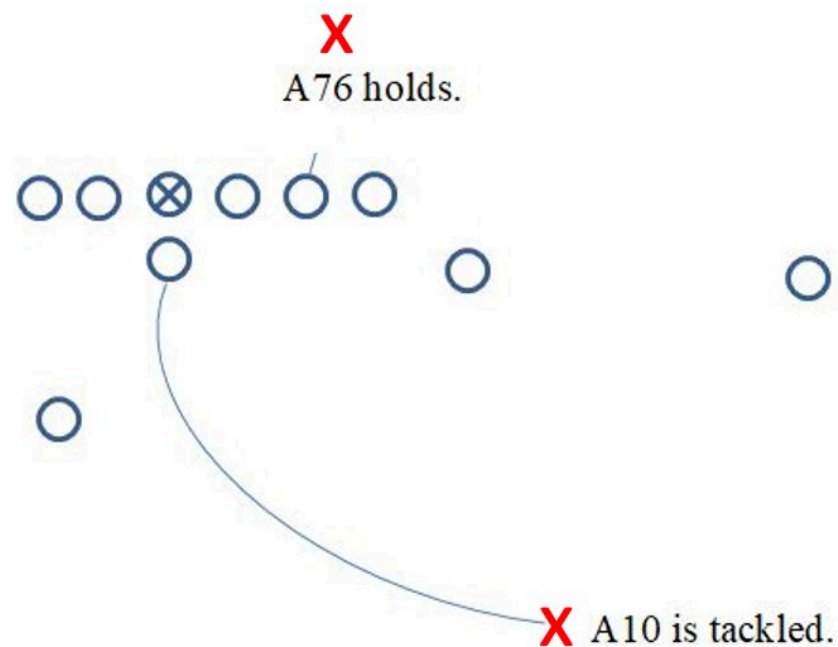
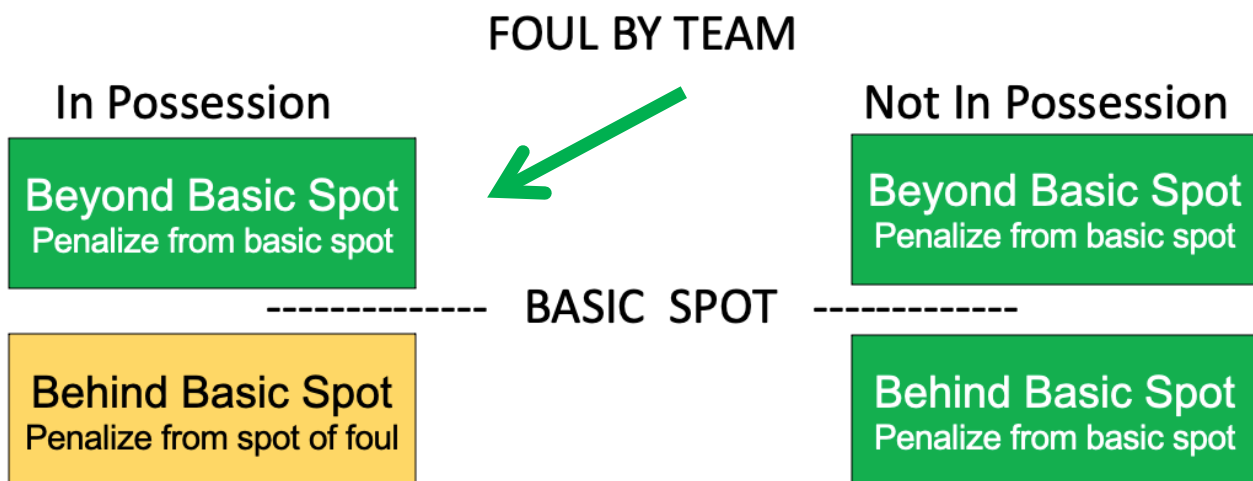
Not In Possession

Beyond Basic Spot
Penalize from basic spot

Behind Basic Spot
Penalize from basic spot



Enforcement?

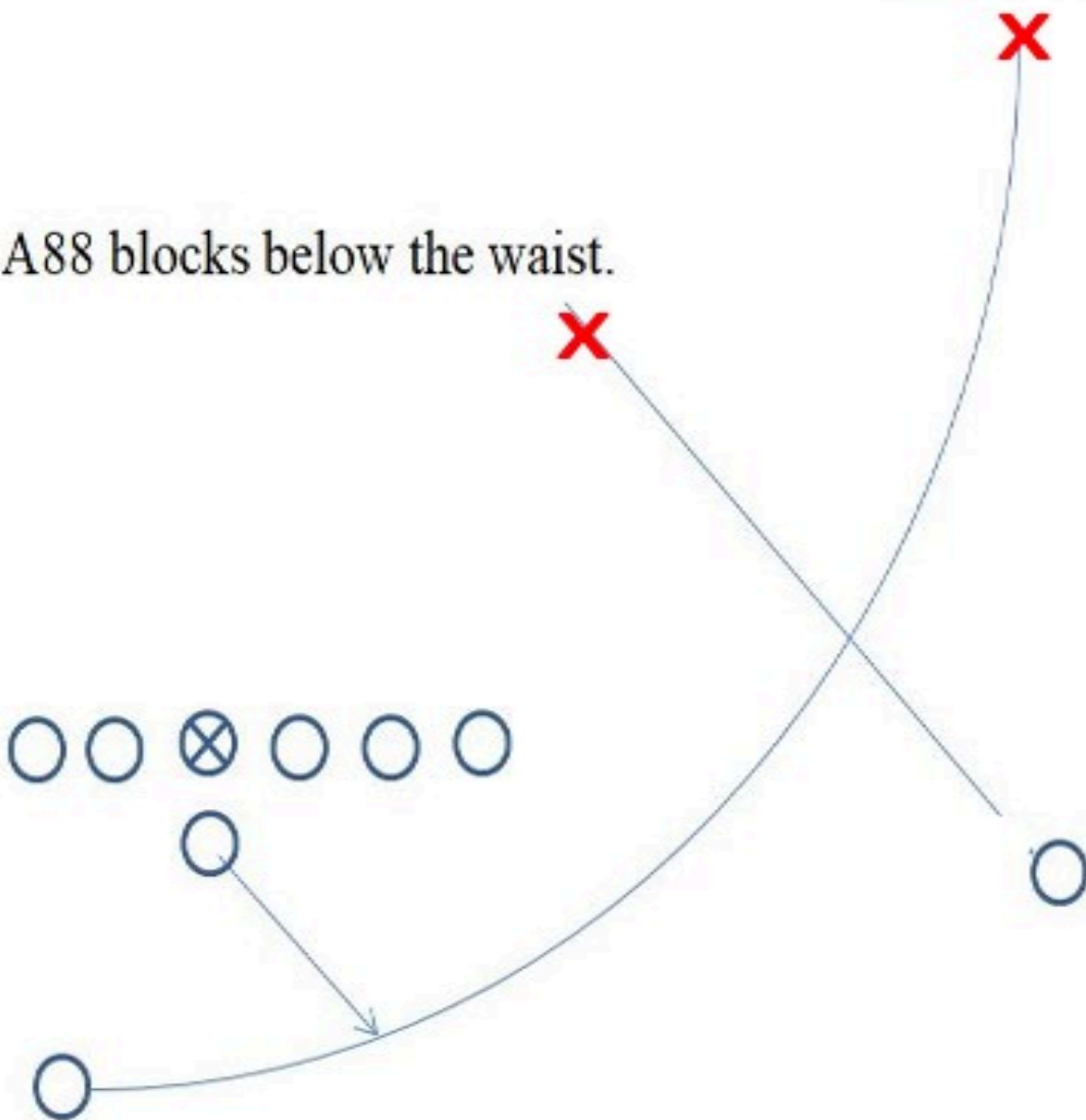


Enforce from the basic spot.
Basic spot is the previous spot
This is one of the 3 in “3-and-1”

A44 is tackled.

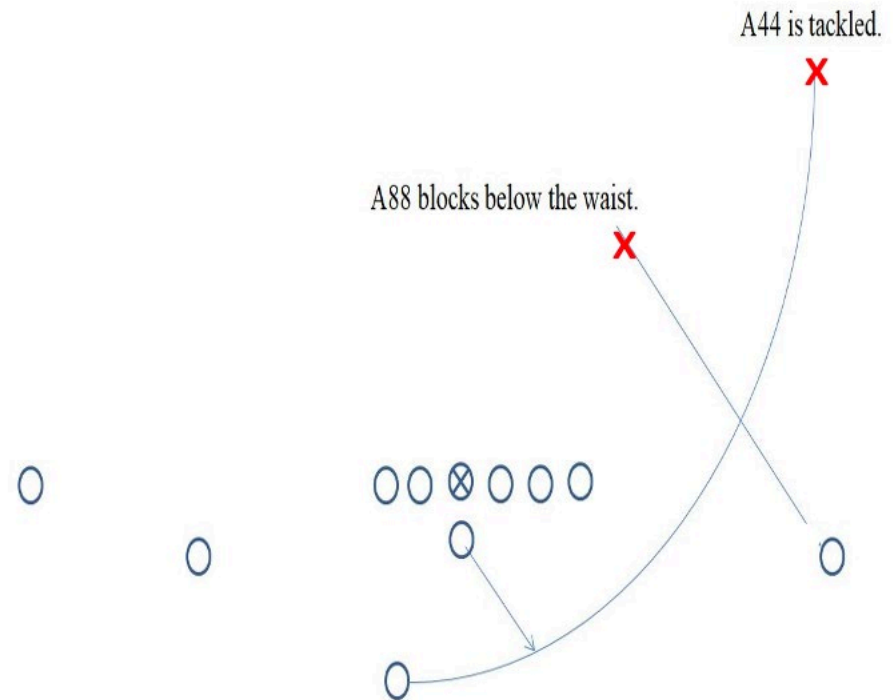


A88 blocks below the waist.



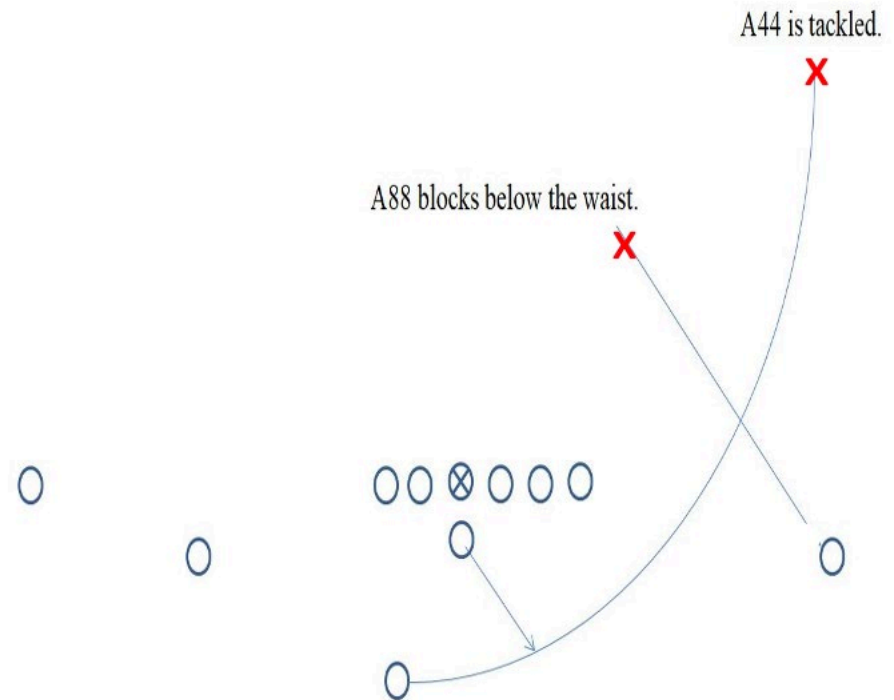
Let's Practice...

- **WHAT** kind of play was run when the foul occurred?
- **WHERE** is the BASIC SPOT?
- **WHO** fouled?
- **WHERE** is the FOUL in relation to the BASIC SPOT?



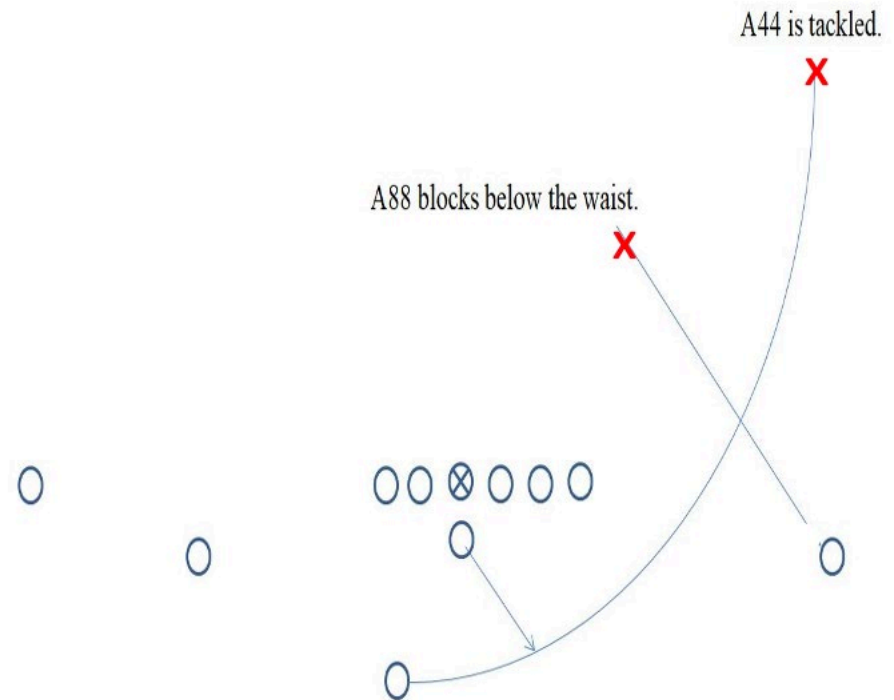
Let's Practice...

- **WHAT** kind of play was run when the foul occurred?
 - Running play ends beyond NZ
- **WHERE** is the BASIC SPOT?
- **WHO** fouled?
- **WHERE** is the FOUL in relation to the BASIC SPOT?



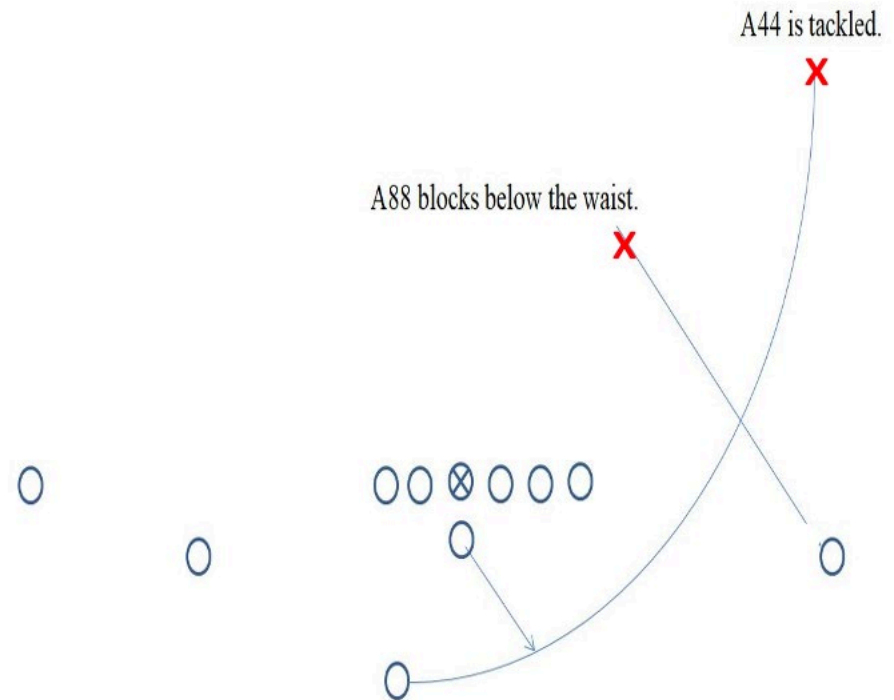
Let's Practice...

- **WHAT** kind of play was run when the foul occurred?
 - Running play ends beyond NZ
- **WHERE** is the BASIC SPOT?
 - End of related run
- **WHO** fouled?
- **WHERE** is the FOUL in relation to the BASIC SPOT?



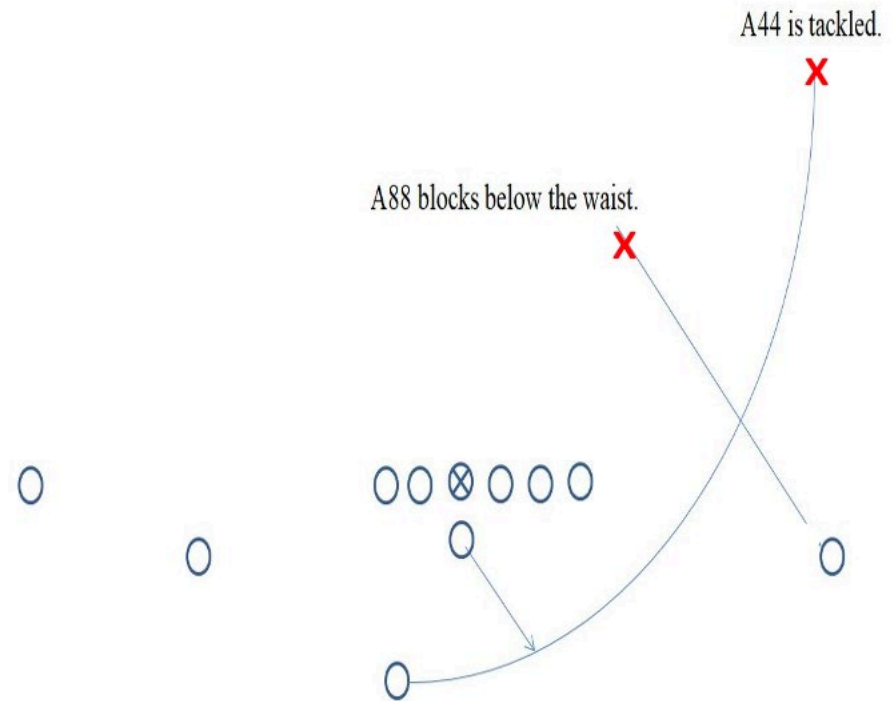
Let's Practice...

- **WHAT** kind of play was run when the foul occurred?
 - Running play ends beyond NZ
- **WHERE** is the BASIC SPOT?
 - End of related run
- **WHO** fouled?
 - Team in possession
- **WHERE** is the FOUL in relation to the BASIC SPOT?



Let's Practice...

- **WHAT** kind of play was run when the foul occurred?
 - Running play ends beyond NZ
- **WHERE** is the BASIC SPOT?
 - End of related run
- **WHO** fouled?
 - Team in possession
- **WHERE** is the FOUL in relation to the BASIC SPOT?
 - Behind Basic Spot



Enforcement?

FOUL BY TEAM

In Possession

Beyond Basic Spot
Penalize from basic spot

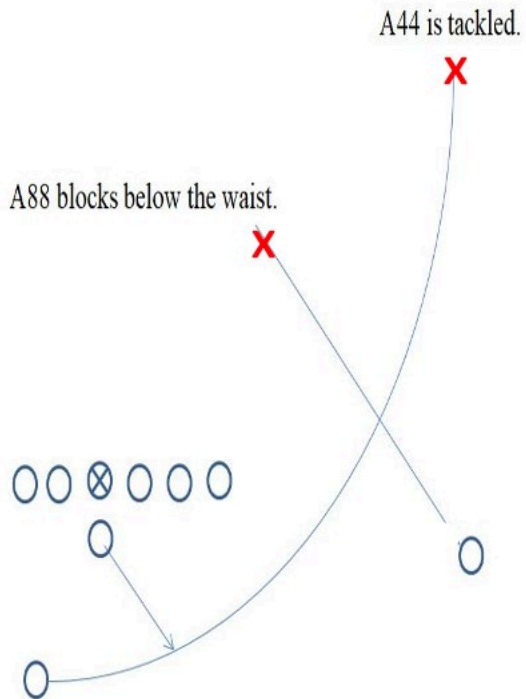
Behind Basic Spot
Penalize from spot of foul

Not In Possession

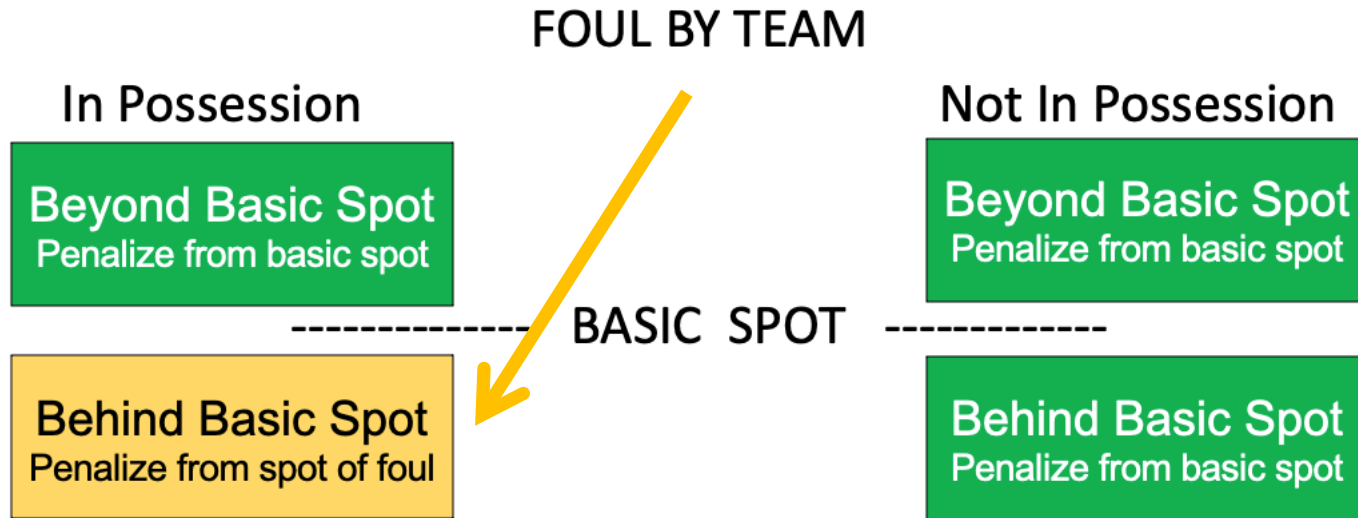
Beyond Basic Spot
Penalize from basic spot

Behind Basic Spot
Penalize from basic spot

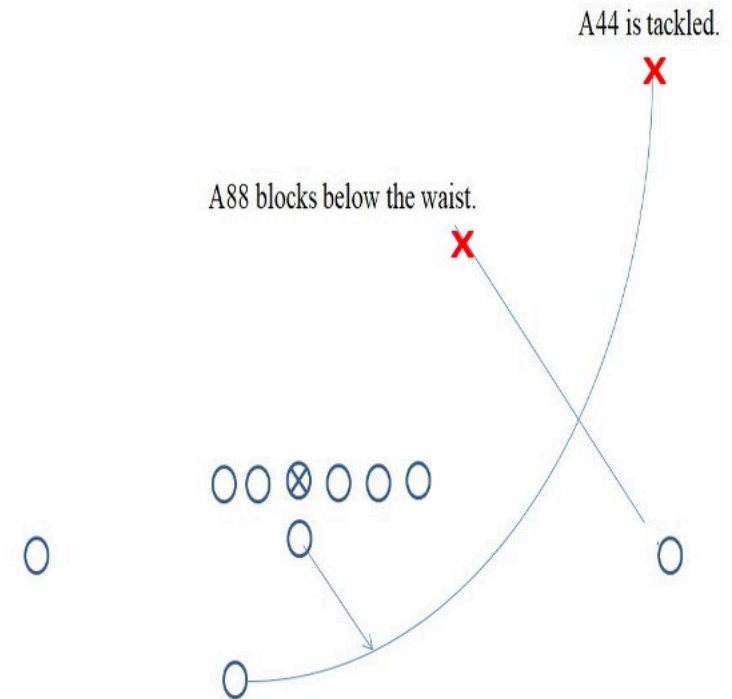
BASIC SPOT

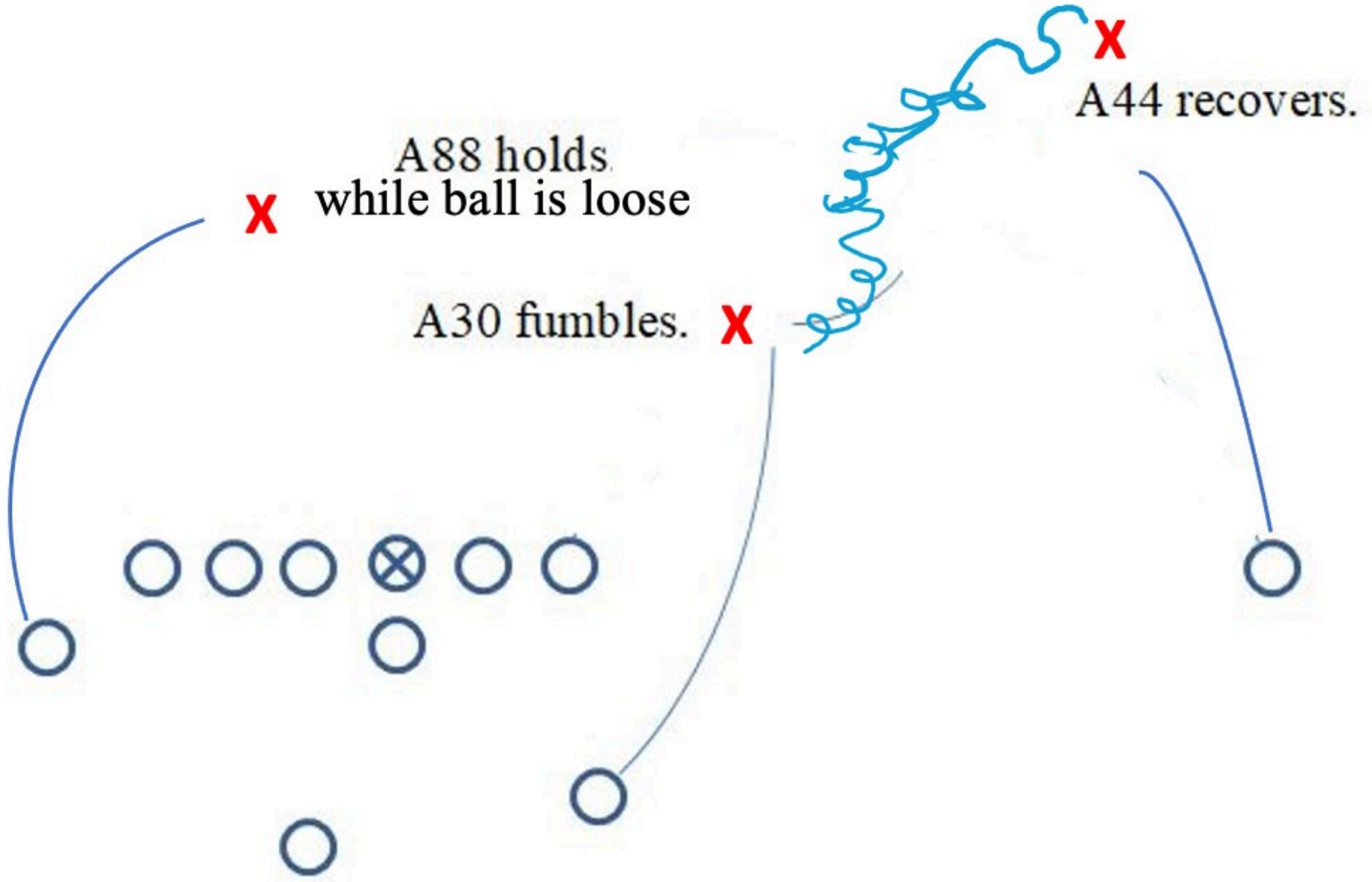


Enforcement?



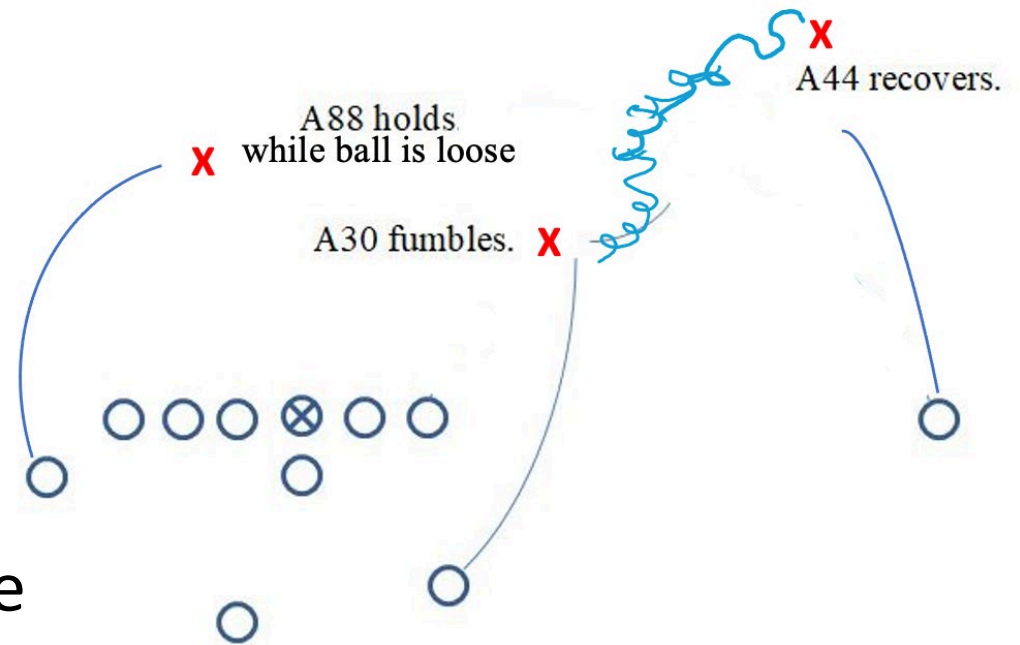
- Enforce from the spot of the foul.
- **This is the 1 in "3-and-1"**





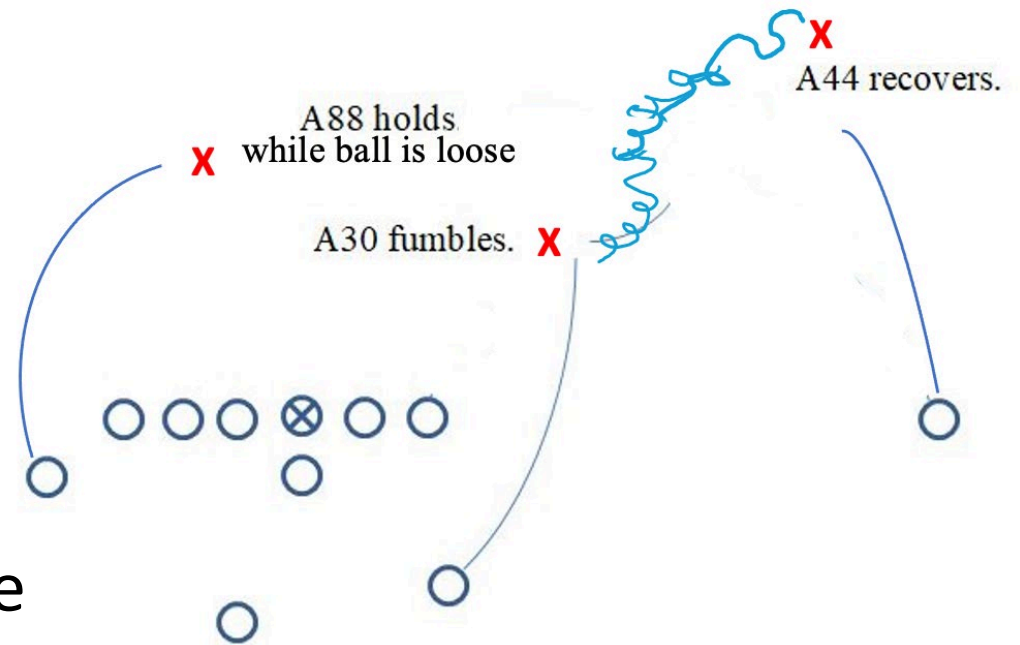
Let's Practice...

- **WHAT** kind of play was run when the foul occurred?
- **WHERE** is the BASIC SPOT?
- **WHO** fouled?
- **WHERE** is the FOUL in relation to the BASIC SPOT?



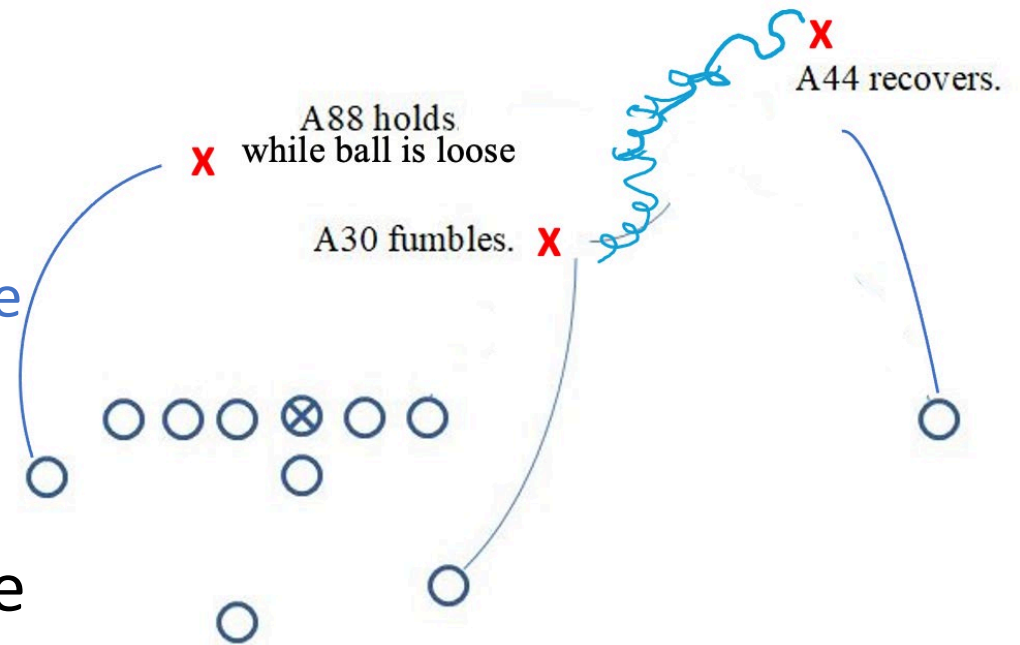
Let's Practice...

- **WHAT** kind of play was run when the foul occurred?
 - Running play ends beyond NZ
- **WHERE** is the BASIC SPOT?
- **WHO** fouled?
- **WHERE** is the FOUL in relation to the BASIC SPOT?



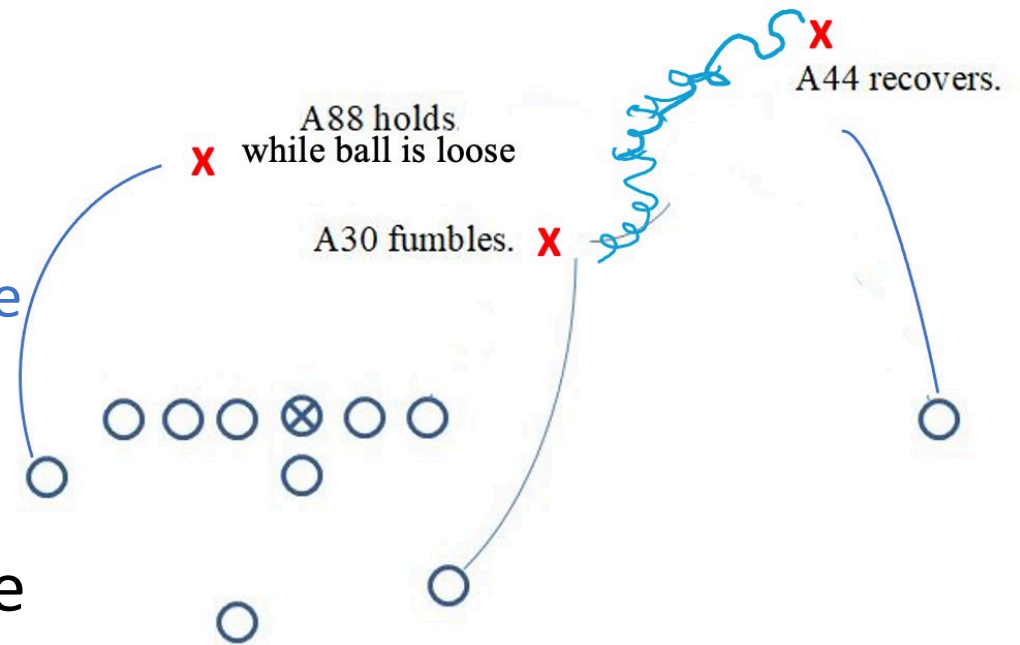
Let's Practice...

- **WHAT** kind of play was run when the foul occurred?
 - Running play ends beyond NZ
- **WHERE** is the BASIC SPOT?
 - End of the related run – spot of fumble
- **WHO** fouled?
- **WHERE** is the FOUL in relation to the BASIC SPOT?



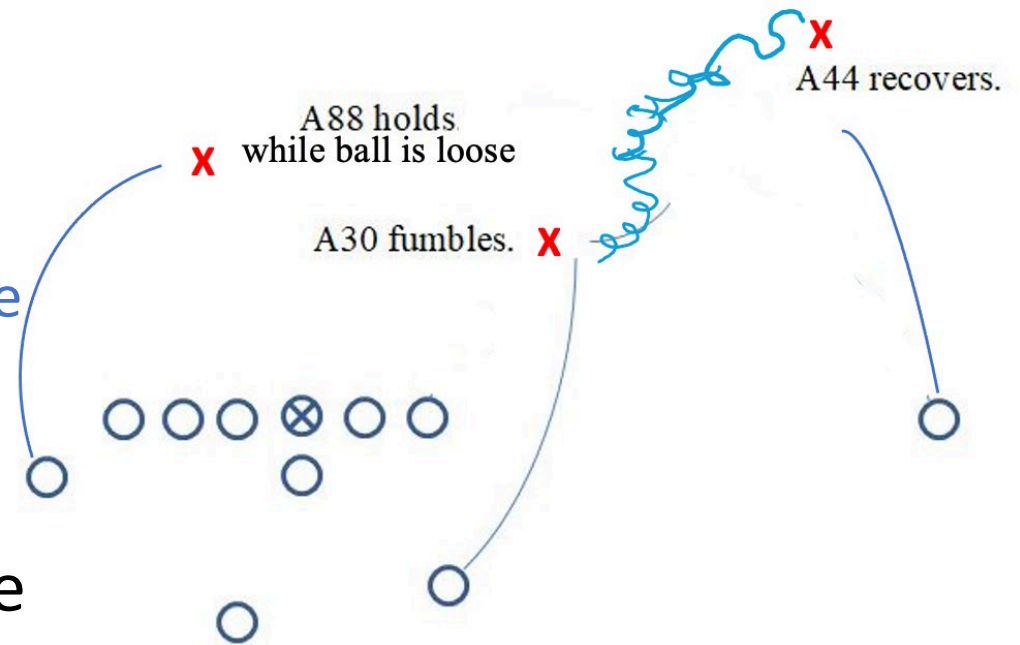
Let's Practice...

- **WHAT** kind of play was run when the foul occurred?
 - Running play ends beyond NZ
- **WHERE** is the BASIC SPOT?
 - End of the related run – spot of fumble
- **WHO** fouled?
 - Team in possession
- **WHERE** is the FOUL in relation to the BASIC SPOT?



Let's Practice...

- **WHAT** kind of play was run when the foul occurred?
 - Running play ends beyond NZ
- **WHERE** is the BASIC SPOT?
 - End of the related run – spot of fumble
- **WHO** fouled?
 - Team in possession
- **WHERE** is the FOUL in relation to the BASIC SPOT?
 - Beyond Basic Spot



Enforcement?

FOUL BY TEAM

In Possession

Beyond Basic Spot
Penalize from basic spot

Behind Basic Spot
Penalize from spot of foul

Not In Possession

Beyond Basic Spot
Penalize from basic spot

Behind Basic Spot
Penalize from basic spot

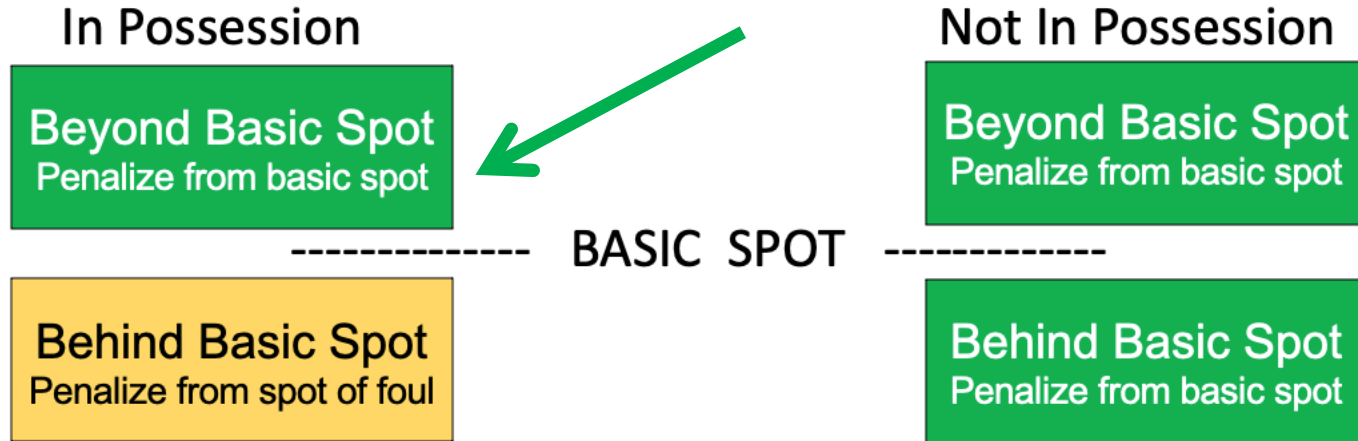
----- BASIC SPOT -----

while ball is loose

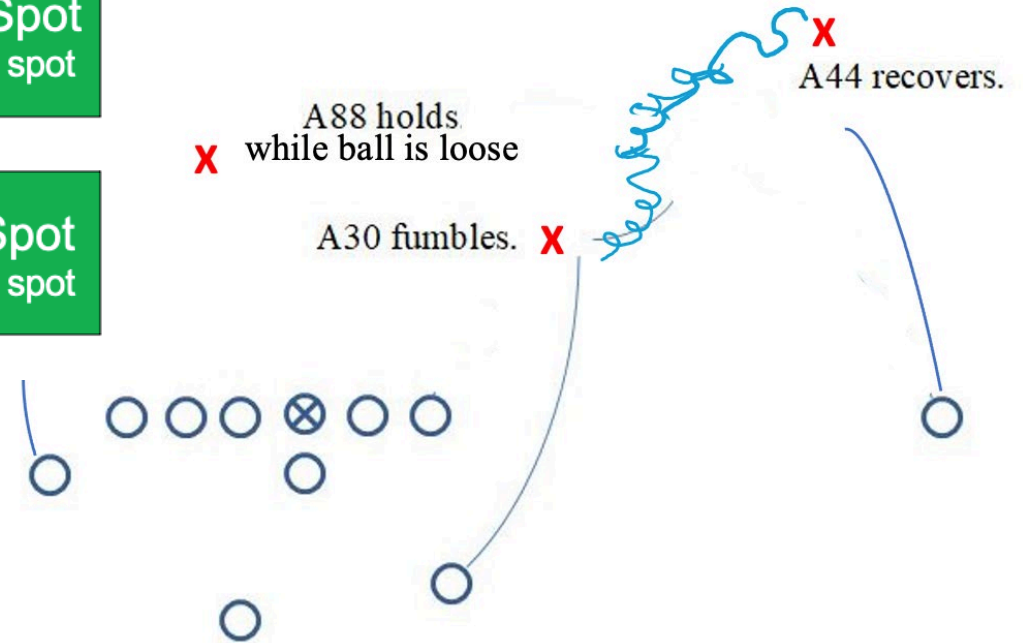


Enforcement?

FOUL BY TEAM

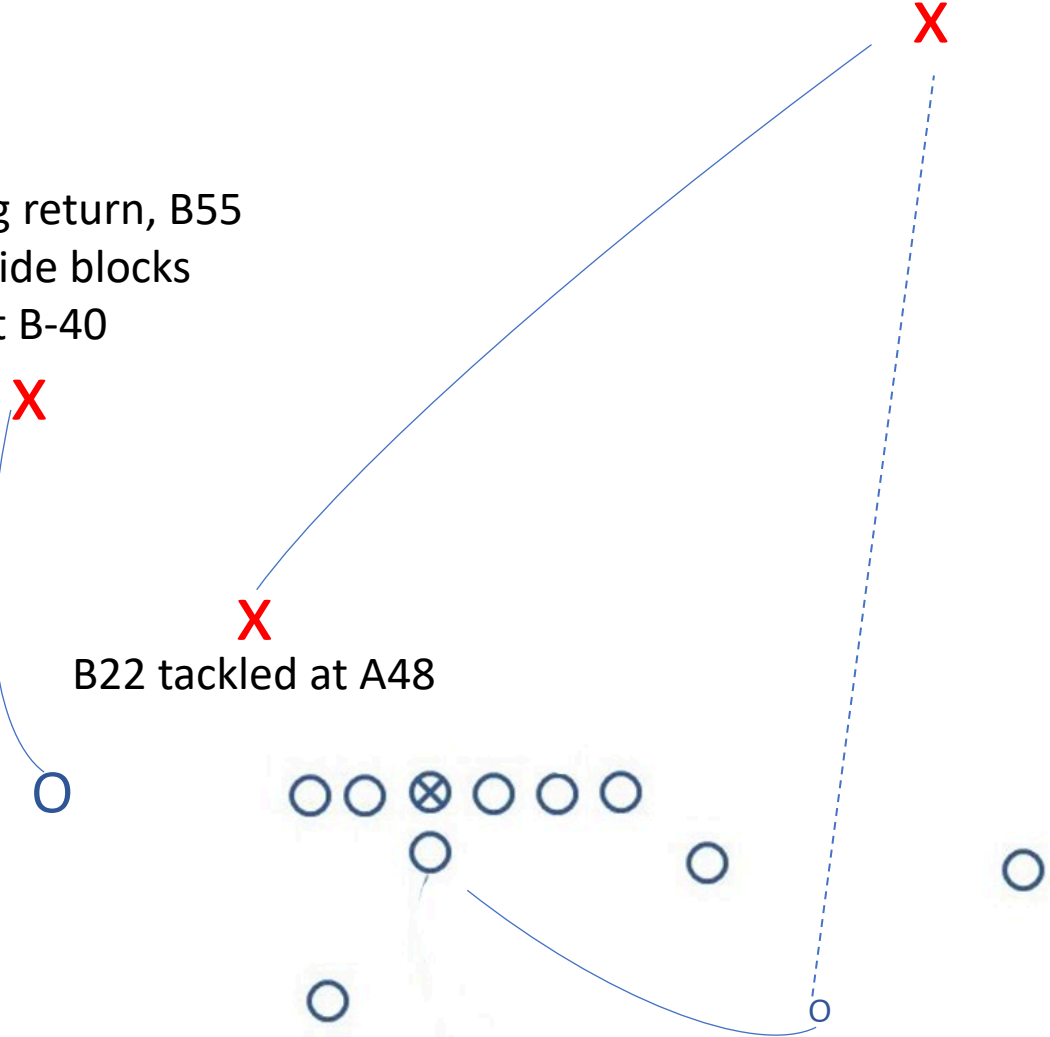


- Enforce from the Basic Spot
- Basic Spot is end of the related run
- End of the related run is spot of the fumble
- This is one of the 3 in “3-and-1”



B 22 Intercepts forward pass at B-15

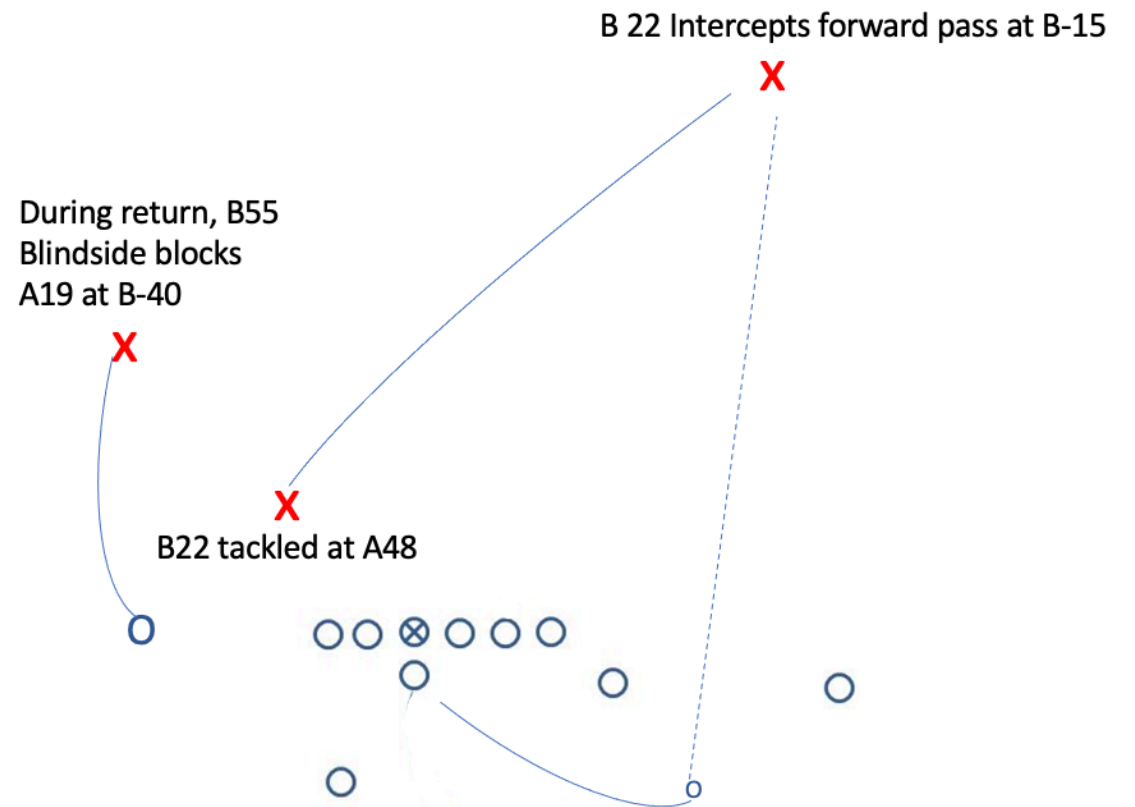
During return, B55
Blindside blocks
A19 at B-40



B22 tackled at A48

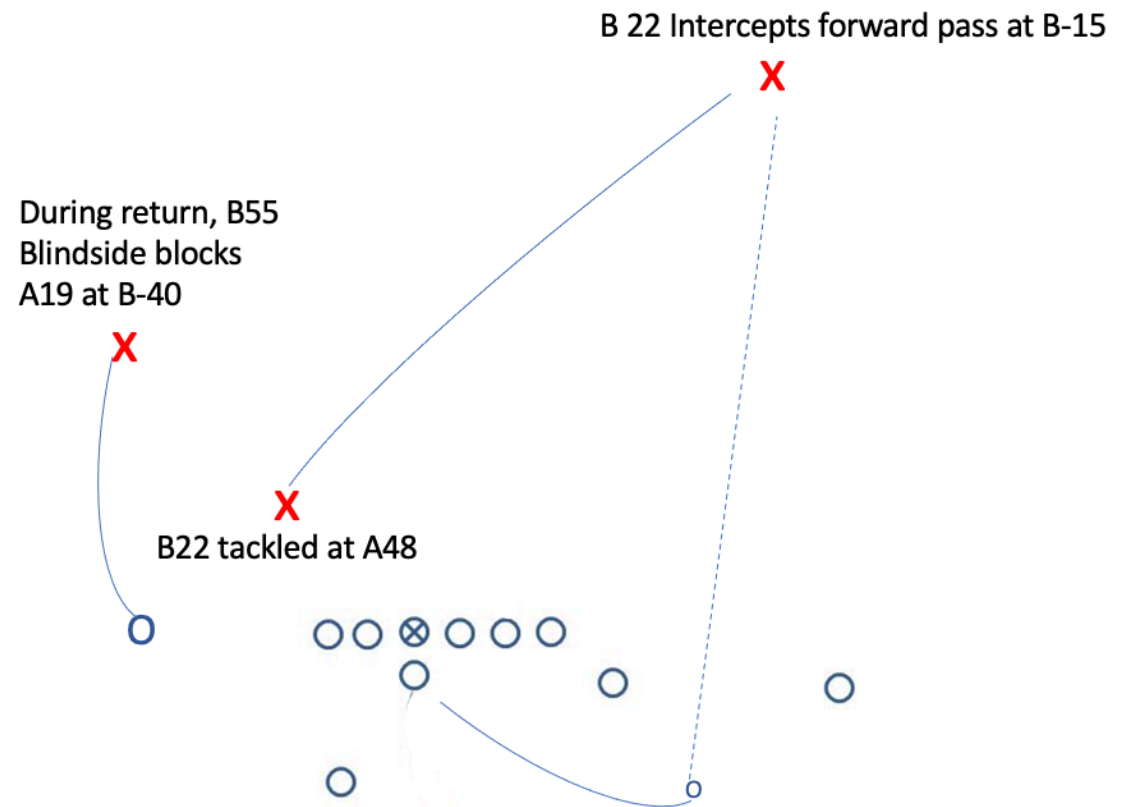
Let's Practice...

- **WHAT** kind of play was run when the foul occurred?
- **WHERE** is the BASIC SPOT?
- **WHO** fouled?
- **WHERE** is the FOUL in relation to the BASIC SPOT?



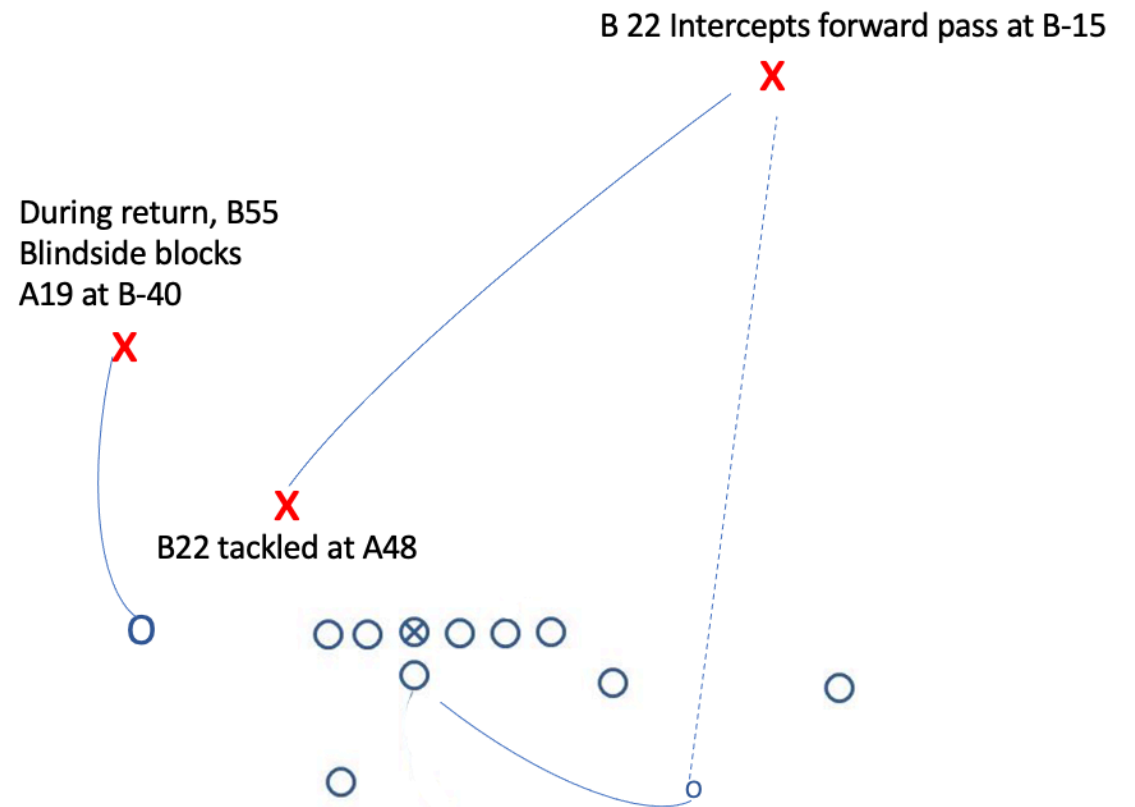
Let's Practice...

- **WHAT** kind of play was run when the foul occurred?
 - Running play without a NZ (turnover)
- **WHERE** is the BASIC SPOT?
- **WHO** fouled?
- **WHERE** is the FOUL in relation to the BASIC SPOT?



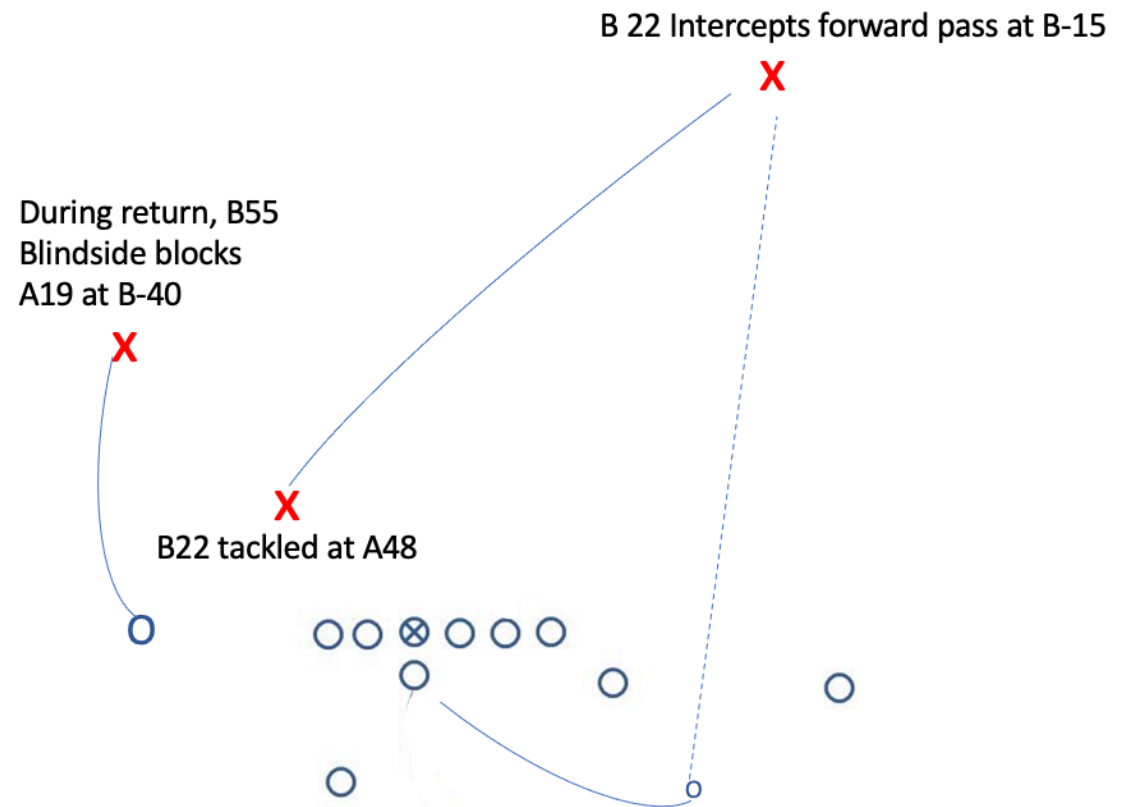
Let's Practice...

- **WHAT** kind of play was run when the foul occurred?
 - Running play without a NZ (turnover)
- **WHERE** is the BASIC SPOT?
 - End of Team B's run
- **WHO** fouled?
- **WHERE** is the FOUL in relation to the BASIC SPOT?



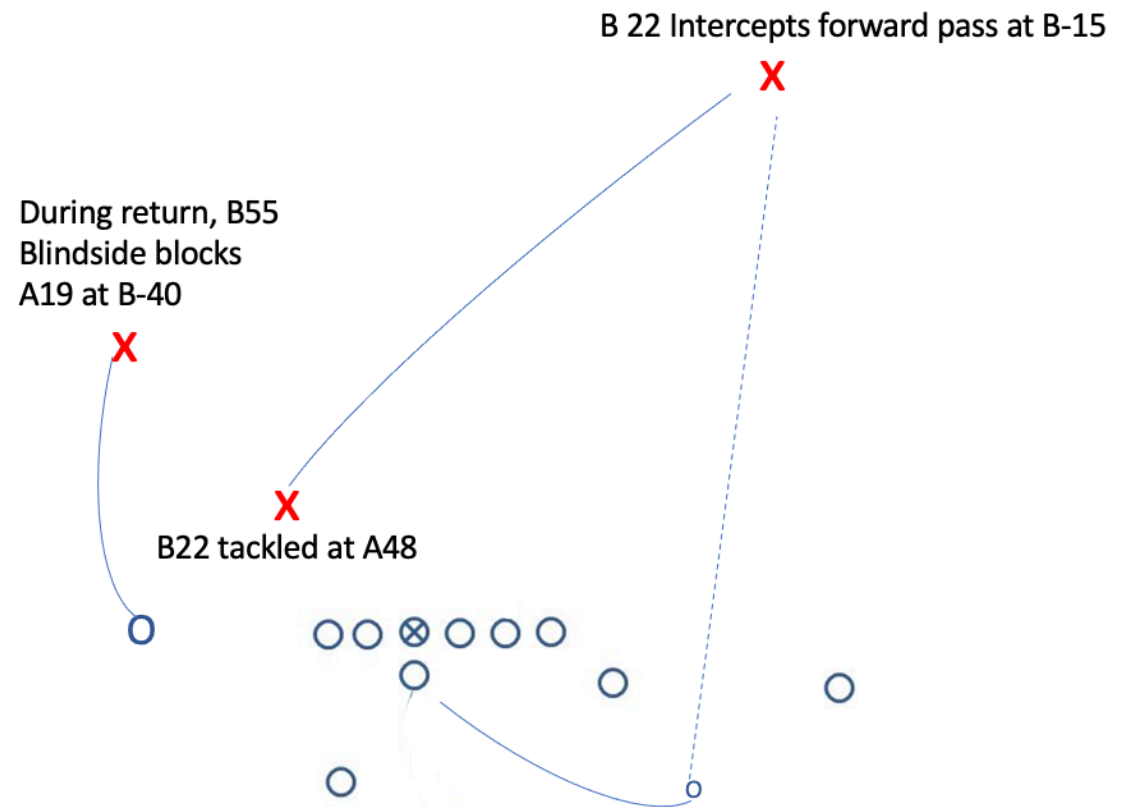
Let's Practice...

- **WHAT** kind of play was run when the foul occurred?
 - Running play without a NZ (turnover)
- **WHERE** is the BASIC SPOT?
 - End of Team B's run
- **WHO** fouled?
 - Team in possession
- **WHERE** is the FOUL in relation to the BASIC SPOT?



Let's Practice...

- **WHAT** kind of play was run when the foul occurred?
 - Running play without a NZ (turnover)
- **WHERE** is the BASIC SPOT?
 - End of Team B's run
- **WHO** fouled?
 - Team in possession
- **WHERE** is the FOUL in relation to the BASIC SPOT?
 - Behind Basic Spot



Let's Practice...

FOUL BY TEAM

In Possession

Beyond Basic Spot
Penalize from basic spot

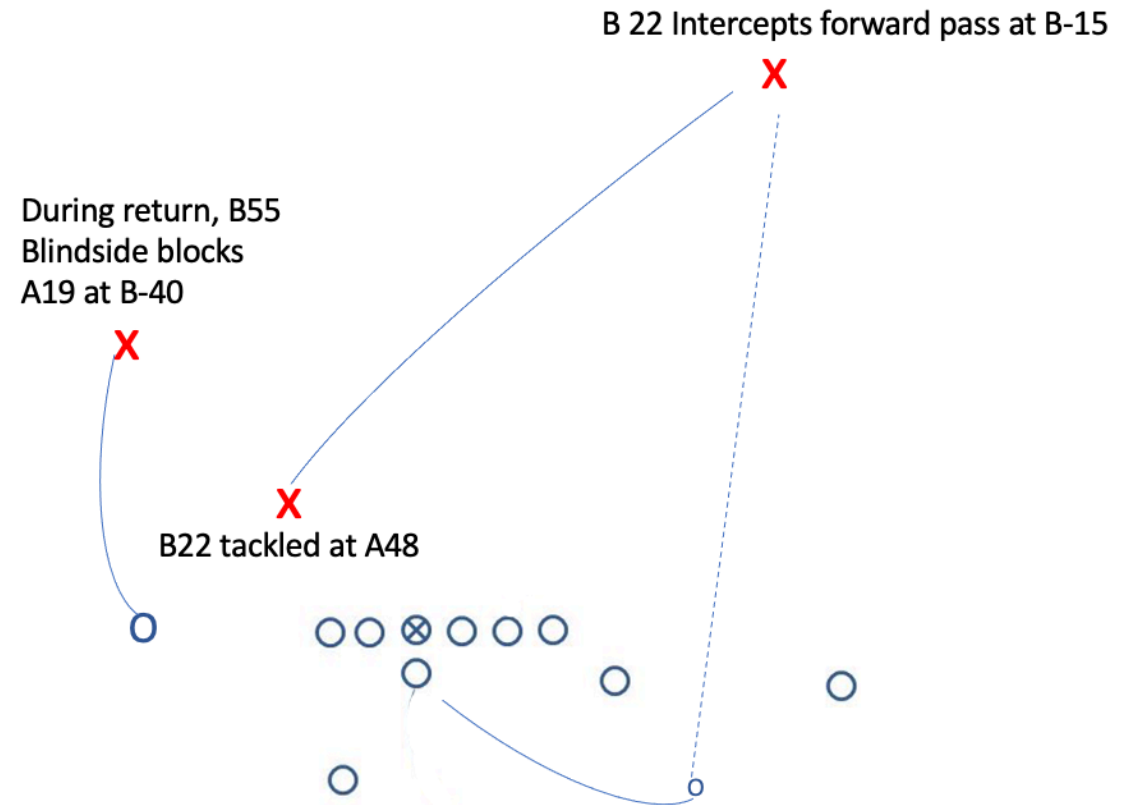
Behind Basic Spot
Penalize from spot of foul

BASIC SPOT

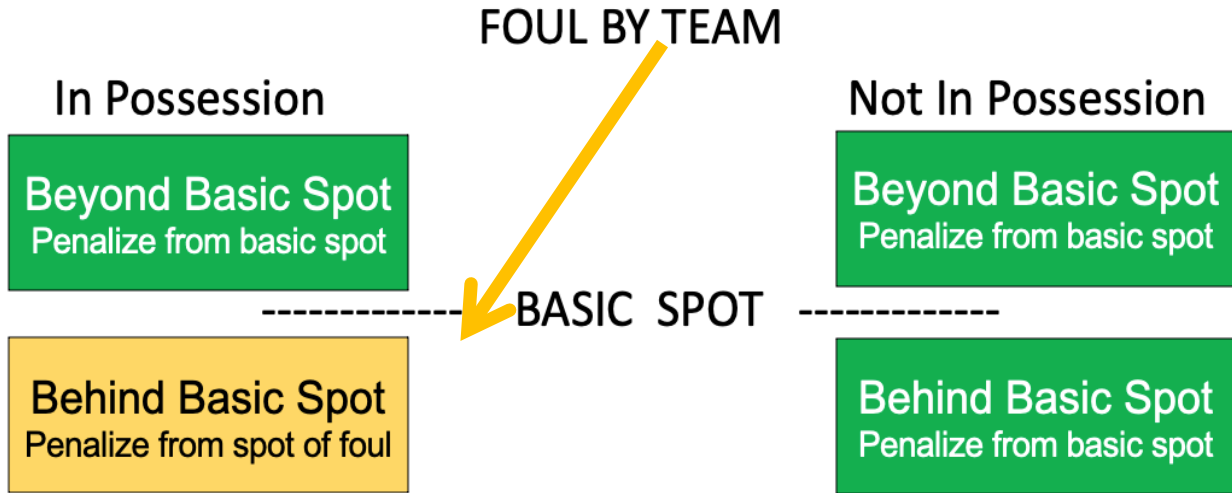
Not In Possession

Beyond Basic Spot
Penalize from basic spot

Behind Basic Spot
Penalize from basic spot

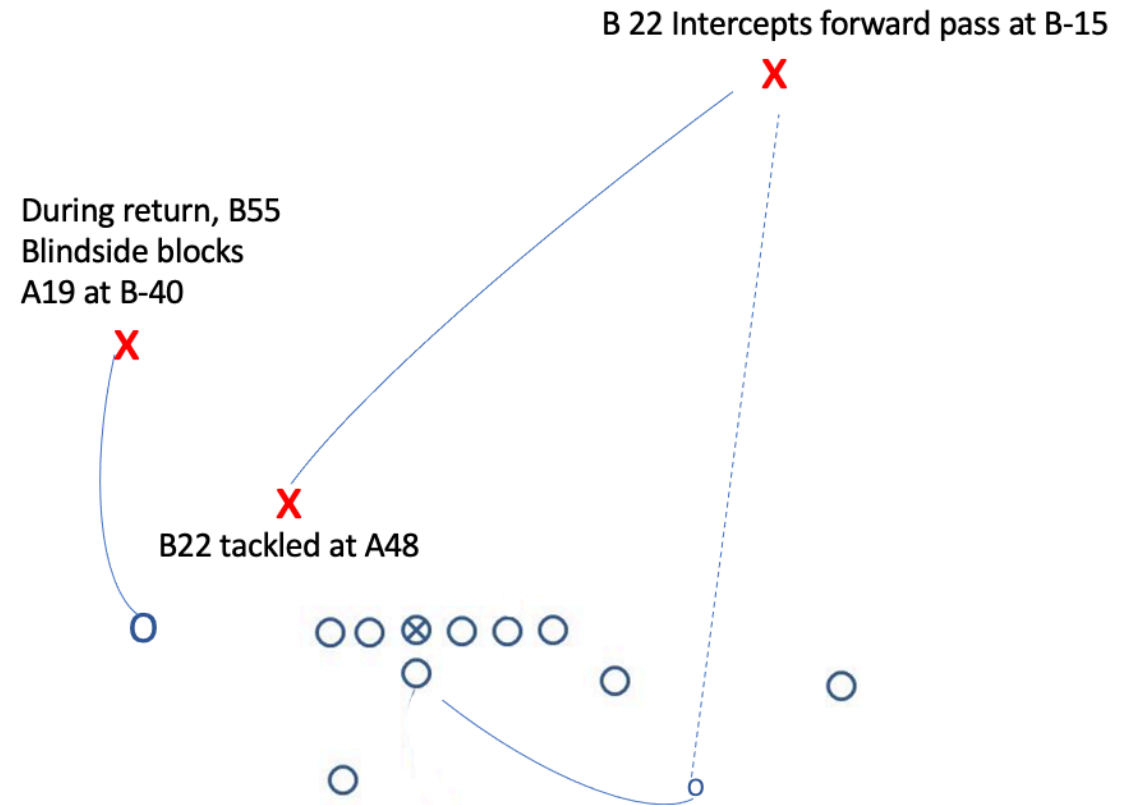


Let's Practice...



Enforce from the spot of the foul.

This is the 1 in "3-and-1"



Note:

“3-and-1” does NOT mean “from where it hurts them the most”

- EXAMPLE: A10 is tackled for a 4 yd loss. During the play, B35 grabs and twists A88’s facemask 12yds beyond the NZ.
- RULING:



Note:

“3-and-1” does NOT mean “from where it hurts them the most”

- EXAMPLE: A10 is tackled for a 4 yd loss. During the play, B35 grabs and twists A88’s facemask 12yds beyond the NZ.
- RULING: 15 yd penalty against Team B. Enforced from Basic Spot, which in this case is the previous spot.
(“where it hurts the most” would be the spot of the foul)



Post Scrimmage Kick Enforcement



Post Scrimmage Kick Enforcement 10-2-3

If **Team B** fouls during a scrimmage kick, PSK enforcement applies only if:

- The kick crosses the NZ
 - The foul occurs before the end of the kick
 - Team B will next put the ball into play
 - Other than a try, a successful FG or during an extra period
-
- If kick ends in field of play, PSK spot/Basic Spot is where kick ends (beanbag)
 - If kick ends in Team B's endzone, PSK spot is Team B's 20 yd line



Post Scrimmage Kick Enforcement 10-2-3

EXAMPLE: Punt receiver catches the kick at the B-16 and returns it to the B-48. During the kick, B62 clips a Team A player at the B-35.

RULING:



Post Scrimmage Kick Enforcement 10-2-3

EXAMPLE: Punt receiver catches the kick at the B-16 and returns it to the B-48. During the kick, B62 clips a Team A player at the B-35.

RULING:

- Clip occurs while the ball is still a kick (before Team B gains possession)
- Basic spot/PSK spot is the end of the kick.
- Enforce from the B16. Penalize half the distance.
- Team B's ball, 1st and 10 from the B8



Post Scrimmage Kick Enforcement 10-2-3

EXAMPLE: B27 downs a punt in his own end zone. During the kick, B57 blocks a Team A player below the waist (a) at the B-10 (b) at the B-32.

RULING:

(a)

(b)



Post Scrimmage Kick Enforcement 10-2-3

EXAMPLE: B27 downs a punt in his own end zone. During the kick, B57 blocks a Team A player below the waist (a) at the B-10 (b) at the B-32.

RULING:

(a) Basic spot is the B-20 (end of the kick). Foul is behind the basic spot, so enforce from the spot of the foul (the 1 in “3-and-1”) half the distance to the B-5.

(b)



Post Scrimmage Kick Enforcement 10-2-3

EXAMPLE: B27 downs a punt in his own end zone. During the kick, B57 blocks a Team A player below the waist (a) at the B-10 (b) at the B-32.

RULING:

- (a) Basic spot is the B-20 (end of the kick). Foul is behind the basic spot, so enforce from the spot of the foul (the 1 in “3-and-1”) half the distance to the B-5.
- (b) Basic spot is the B-20 (end of the kick). Foul is beyond the basic spot, so enforce from the basic spot, half the distance to the B-10.



Fouls on Scoring Plays



Fouls on Scoring Plays 10-2-5

Fouls by defense DURING a touchdown play:

- Penalties for PERSONAL FOULS enforced on try or kickoff.
 - Do NOT carry over into Extra Period.
-
- Penalties for all other fouls do not carry over. Usually they are declined by rule.
 - Exception: when illegal touching enables enforcement



Fouls on Scoring Plays 10-2-5

EXAMPLE:

A89 catches a legal forward pass for a TD. During the play,

- a) B79 is offsides
- b) B26 commits DPI
- c) B63 roughs the passer.



Fouls on Scoring Plays 10-2-5

EXAMPLE:

A89 catches a legal forward pass for a TD. During the play,

a) B79 is offsides

- Not a personal foul. Penalty declined by rule. TD counts.

b) B26 commits DPI

c) B63 roughs the passer.



Fouls on Scoring Plays 10-2-5

EXAMPLE:

A89 catches a legal forward pass for a TD. During the play,

a) B79 is offsides

- Not a personal foul. Penalty declined by rule. TD counts.

b) B26 commits DPI

- DPI is not a personal foul. Penalty declined by rule. TD counts.

c) B63 roughs the passer.



Fouls on Scoring Plays 10-2-5

EXAMPLE:

A89 catches a legal forward pass for a TD. During the play,

a) B79 is offsides

- Not a personal foul. Penalty declined by rule. TD counts.

b) B26 commits DPI

- DPI is not a personal foul. Penalty declined by rule. TD counts.

c) B63 roughs the passer.

- Personal foul. TD counts. Penalty enforced on try or kickoff.



Fouls on Scoring Plays 10-2-5-c

Unsportsmanlike Conduct fouls DURING OR AFTER touchdown play:

- Penalty enforced on try or kickoff (on try in extra period)

Personal Foul committed BETWEEN touchdown and try:

- Penalty enforced on try or kickoff (on try in extra period)



Penalty Enforcement on a Try



Penalty Enforcement on the Try 8-3-3, -4, -5

Successful try. Foul by Team B.

- Team A may decline penalty and keep the score
- Team A may accept penalty and go for 2pts

However...

Successful try. PERSONAL FOUL on Team B

- Team A may accept penalty and carry over to kickoff or extra period



Penalty Enforcement on the Try 8-3-3, -4, -5

If there is NO change of possession...

Offsetting fouls: Repeat try

Loss-of-down: Try is over, no penalty, no score.

Kick-Catch-Interference: Penalty declined by rule.



Penalty Enforcement on the Try 8-3-3, -4, -5

If there is a CHANGE OF POSSESSION...

If EITHER team (not both) fouls after change of possession:

- Penalty is declined by rule, no carry over
 - EXCEPTION: Flagrant Personal Foul or LBF treated as DBF penalty carries over

If BOTH teams foul and Team B fouls BEFORE gaining possession

- Fouls offset, down is replayed

If BOTH teams foul and Team B fouls AFTER gaining possession

- Fouls cancel. No replay. Exception to 10-1-4 does not apply



Penalty Enforcement on the Try 8-3-3, -4, -5

EXAMPLE:

A46 illegally in motion and B76 offside. B35 intercepts pass and is tackled.

Ruling:



Penalty Enforcement on the Try 8-3-3, -4, -5

EXAMPLE:

A46 illegally in motion and B76 offside. B35 intercepts pass and is tackled.

Ruling:

Fouls offset. Repeat try.



Penalty Enforcement on the Try 8-3-3, -4, -5

EXAMPLE:

A46 illegally in motion. B56 intercepts pass and B21 blocks a Team A player on the return.

Ruling:



Penalty Enforcement on the Try 8-3-3, -4, -5

EXAMPLE:

A46 illegally in motion. B56 intercepts pass and B21 blocks a Team A player on the return.

Ruling:

Fouls cancel. No replay of down. No “clean hands” option for Team B.



Penalty Enforcement on the Try 8-3-3, -4, -5

EXAMPLE:

B21 intercepts pass and is tackled at the B35. During the run, B64 clips in Team B's end zone.

Ruling:



Penalty Enforcement on the Try 8-3-3, -4, -5

EXAMPLE:

B21 intercepts pass and is tackled at the B35. During the run, B64 clips in Team B's end zone.

Ruling:

Penalty declined by rule. Try is over. NOT a safety.



Defensive Pass Interference



Defensive Pass Interference

- DPI is not a personal foul, so it can never carry over if committed during a touchdown play.
- If the DPI occurs less than 15 yds from LOS, it is a spot foul
- If the DPI occurs more than 15 yds from LOS, penalty is 15yds from the previous spot.



Defensive Pass Interference

- Inside the 30-yd line, you mark off the full 15 yard penalty. There is not a “half the distance” penalty until the previous spot is at the 2-yd line.
- Inside the 17-yd line, you will place the ball at the 2-yd line. This is sometimes referred to as the “moving window.”
- For DPI in the endzone, the succeeding spot is the 2-yd line.



DPI on a Try

- Ball snapped at or inside the 3-yd line, use half the distance enforcement.
- Ball snapped outside the 3-yd line, use the moving window.





Tonight's Check-in Codes:

Birdville: 5773

Denton: 8244

Weatherford: 6457

FWFO: 888-789-3936 EXT: 801

questions@fwfo.org